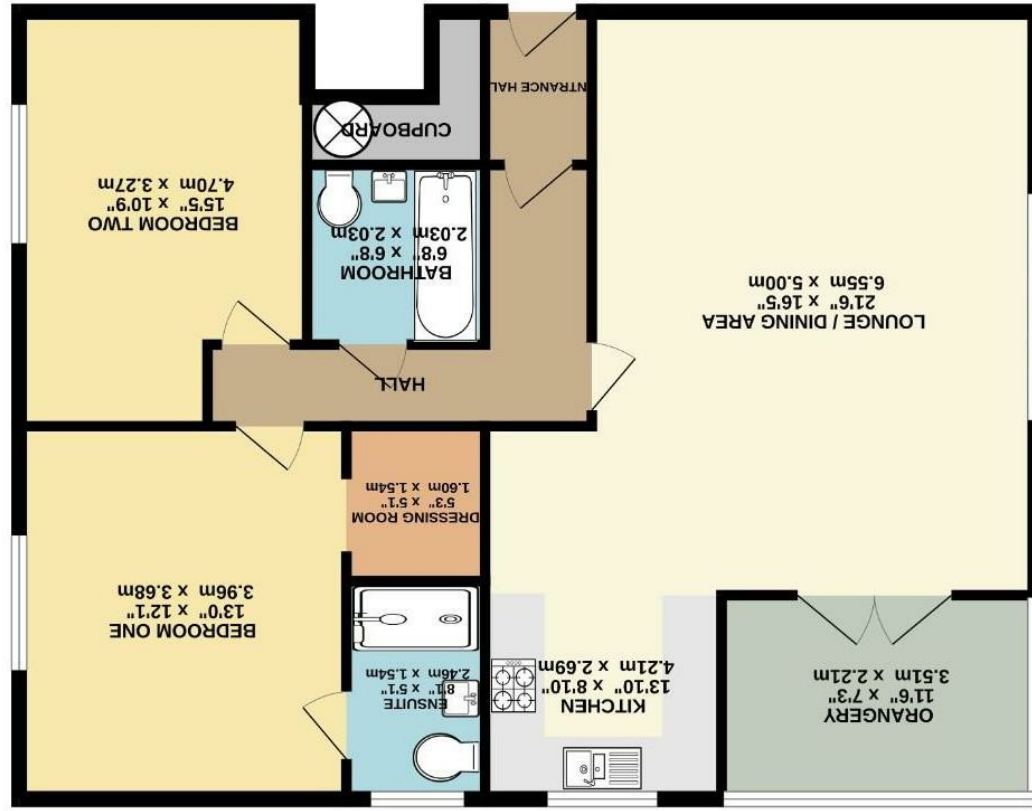


These particulars are believed to be accurate but they are not guaranteed and do not form a contract. Neither Jordan Fishwick nor the vendor or lessor accept any responsibility in respect of these particulars, which are not intended to be statements or representations of fact and any intending purchaser or lessee must satisfy himself by inspection or otherwise as to the correctness of each of the statements contained in these particulars. Any floorplans on this brochure are for illustrative purposes only and are not necessarily to scale.

TOTAL FLOOR AREA: 1074 sq.ft. (99.8 sq.m.) approx.
Measurements are approximate, for scale. Illustrative purposes only.
Made with AutoCAD 2022



SECOND FLOOR
1074 sq.ft. (99.8 sq.m.) approx.





Larke Rise, West Didsbury M20 2UL

£365,000

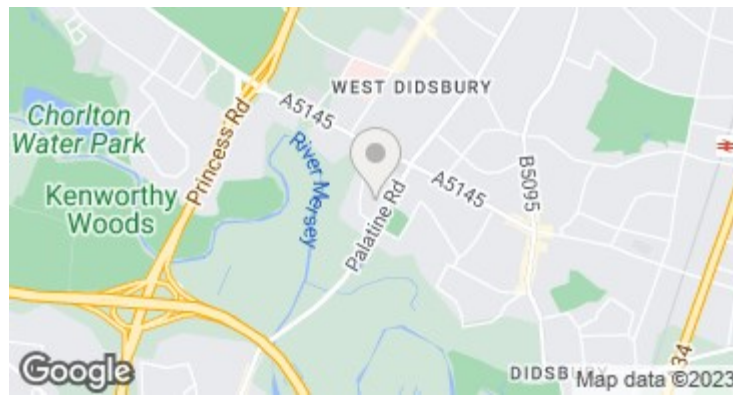


The Property

An IMPRESSIVE apartment located within the POPULAR LARKE RISE DEVELOPMENT, standing in LANDSCAPED grounds off Mersey Road in a GREAT LOCATION between Didsbury and West Didsbury Villages. 1074 sq ft. The spacious living space is well planned with numerous noteworthy features including two double bedrooms with ample space for freestanding furniture and the main with a separate walk-in wardrobe and en-suite shower room, large open plan kitchen/living area with integrated appliances, separate orangery/dining room, main bathroom with white suite and chrome fittings and a generous L-shaped entrance hall with built-in storage cupboards. In addition, there is a large communal entrance area with security intercom and lift access to all floors, well tended communal grounds and allocated parking. *NO ONWARD CHAIN*

Directions

M20 2UL



- Impressive apartment
- Popular gated development
- Great location in West Didsbury
- Double glazed windows
- Two double bedrooms
- Main bathroom & En-Suite
- Large open plan living/kitchen
- Separate Orangery/Dining Room
- Allocated parking
- No onward chain

Postcode - M20 2UL

EPC Rating - C

Floor Area - 1074.00 sq ft

Local Authority - Manchester City Council

Council Tax - D

